

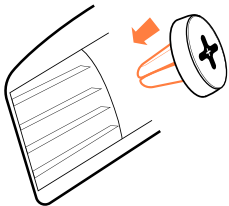
**M4s**

**CarMount**

USER GUIDE

+ MORPHEUS **LABS**

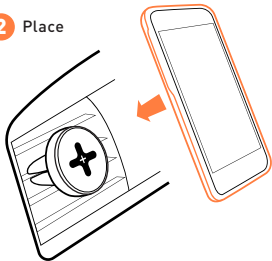
**1** Insert



**Attention:**

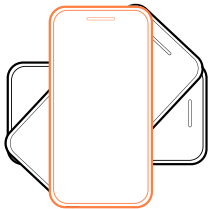
- Gently insert and remove the CarMount to the air vent blades, do not push or pull strongly.

**2** Place

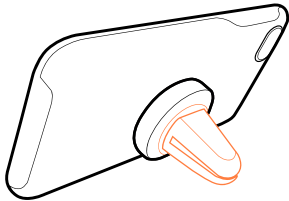


- Please notice that this product is designed for horizontal air vent blades only!

**3** Adjust steplessly



**4** Stand



## Morpheus Labs

Distribution

Seven Media Systems GmbH

Moltkestr. 131

50674 Cologne

Germany

[support@morpheus-labs.com](mailto:support@morpheus-labs.com)

Tel.: +49 221 677 833 060

Fax.: +49 221 677 833 069

[morpheus-labs.com](http://morpheus-labs.com)

[maglid.com](http://maglid.com)

## Find out more and follow us on:



[facebook.com/morpheuslabs](https://facebook.com/morpheuslabs)



[instagram.com/morpheuslabs](https://instagram.com/morpheuslabs)



[youtube.com/user/morpheuslabs](https://youtube.com/user/morpheuslabs)



[pinterest.com/morpheuslabs](https://pinterest.com/morpheuslabs)

# S

**Slim, Solid & Secure!**

